

SMART FILM

JUMBOTRON



Captivate. Engage. Innovate.

Introducing Jumbotron Transparent LED Film Screens.

Imagine a display that transforms your windows into dynamic advertising space, all while maintaining clear visibility. Jumbotron's Transparent LED Film Screens are the future of visual communication.

Unleash Endless Possibilities:

- **Capture Attention:** High-brightness, crystal-clear visuals stop passersby in their tracks.
- **Boost Engagement:** Dynamic content keeps audiences captivated and eager to learn more.
- **Maintain Transparency:** Unlike traditional window displays, our films offer clear views, preserving the natural light and openness of your space.
- **Seamless Integration:** Our ultra-thin, lightweight film adheres directly to existing glass surfaces for a sleek, modern aesthetic.

Perfect for:

- **Retail:** Showcase dynamic promotions and product information without sacrificing window visibility.
- **Corporate:** Create a captivating display in your lobby or conference room.
- **Events:** Make a lasting impression with interactive elements and immersive experiences.
- **Indoor Sports Arena:** Turn your hockey glass into income producing and engaging experiences.

Embrace the future of visual communication. Contact Jumbotron today at 877-794-2220 x 101 and unlock the possibilities of Transparent LED Film Screens



JUMBOTRON

Contents

01 LED FILM SCREEN

02 LED CRYSTAL FILM

03 LED HOLOGRAPHIC FILM

04 Comparison

Features of LED Film

Light&Thin

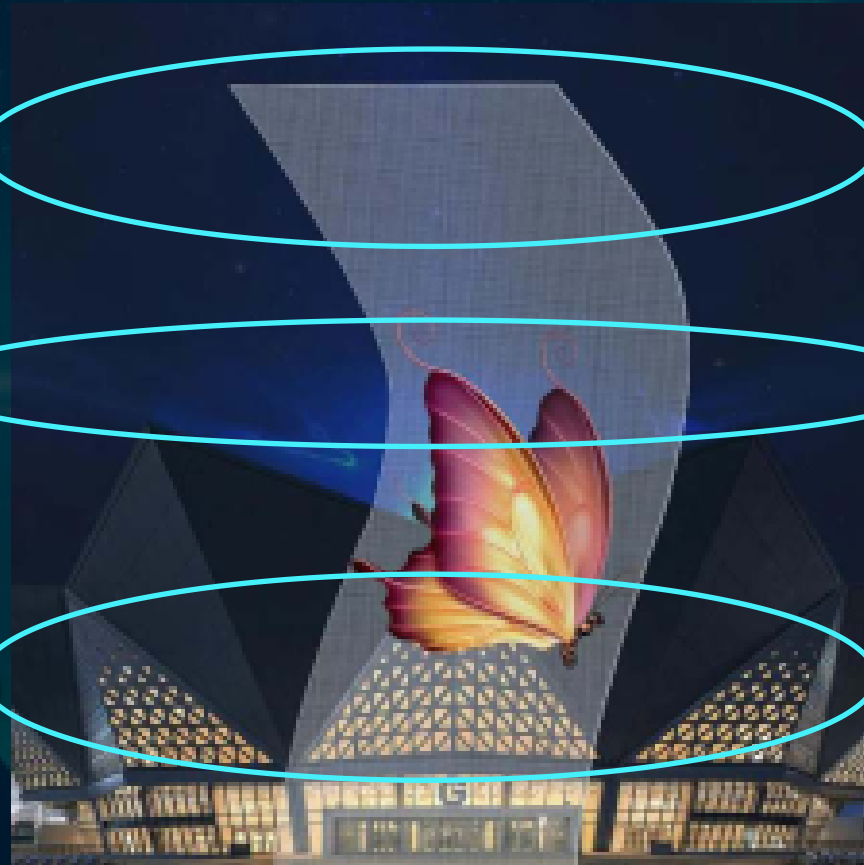
1-3mm thickness,
2kg/m² screen weight is light,
no pressure on the glass.

Flexible

It can be bent and cut,
no size limitations,
can customize design according
to project requirement.

Big viewing angle

Horizontal 160°
vertical ≥140°



Colorful&transparent

The structure is extremely simple,
the transparency is high, does not
affect the glass curtain wall lighting,
and the transparency is as high as 95%

Installation

Easy to install, directly attached
to the glass surface.
No structure cost: installation requires
no additional steel structure, effectively
reduce the installation cost.

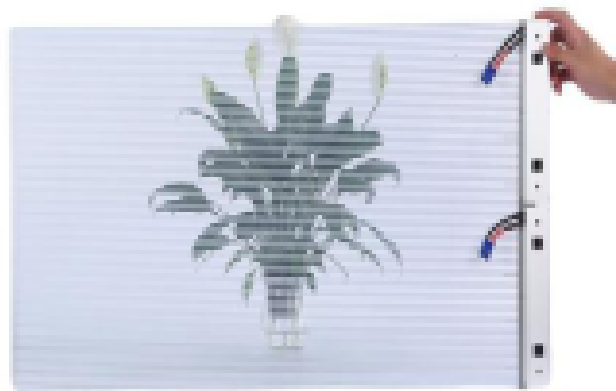
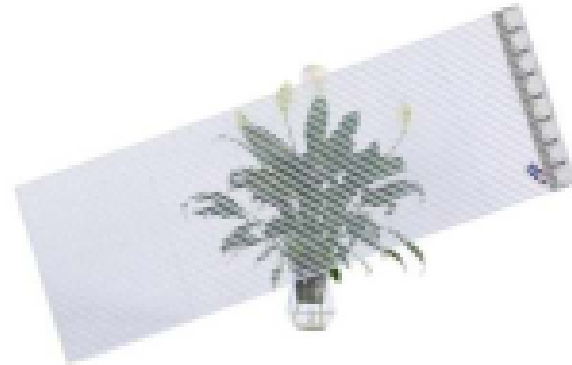
01

LED FILM SCREEN

PH4*8mm



PH10mm



- 1, LED light and drive in one, static drive, SMD2020, Sanan chip;
- 2, Breakpoint continuation , single Led bead is broken, not affect the video playback.
- 3, 50%-95% High transparency, which does not affect the glass daylighting.
- 4, 3-6mm thickness, 3.5kg/ m² weight.
- 5, Easy to install: without steel structure, just stick the thin screen slightly and connect the power signal
- 6, 1500-5000 high brightness
- 7, Not ordinary acrylic material, it's customized PC material, which is softer and less likely to turn yellow, more temperature and heat resistant.
- 8, Gray level: >16bit, video color is rich and delicate

JUMBOTRON LED FILM SCREEN													
		Ph4*8	PH6.5	PH5*10	PH8	PH10	PH16	PH20	PH31.25	PH40	PH50	PH60	
1	Pixel Pitch	L(4mm) * W(8mm)	L(6.5mm) * W(6.5mm)	L(5mm) * W(10mm)	L(8mm) * W(8mm)	L(10mm) * W(10mm)	L(16mm) * W(16mm)	L(20mm) * W(20mm)	L(31.25mm) * W(31.25mm)	L(40mm) * W(40mm)	L(50mm) * W(50mm)	L(60mm) * W(60mm)	
2	Pixel Density	31250 pixels/m²	23716 pixels/m²	20000 pixels/m²	15625 pixels/m²	10000 pixels/ m²	3906 pixels/ m²	2500 pixels/ m²	1024 pixels/ m²	625 pixels/ m²	400 pixels/ m²	278 pixels/m²	
3	Display Thickness	3-6mm											
4	LED chip	SMD2020											
5	Product Size	960*256m m/1200* 256mm	962*416mm /1196*416 mm	960*320mm /1200*320 mm	960*256m m/1200* 256mm	960*320mm /1200*320 mm	960*320mm /1200*320 mm	960*320mm /1200*320 mm	960*320mm /1200*320 mm	1000*250mm	1200*320 mm	1200*400 mm	1200*480 mm
6	Power consumption	Average : 240W/m², Maximum 800W/m²	Average : 240W/m², Maximum 800W/m²	Average : 240W/m², Maximum 800W/m²	Average : 240W/m², Maximum 800W/m²	Average : 240W/m², Maximum 800W/m²	Average : 200W/m², Maximum 600W/m²	Average : 200W/m², Maximum 600W/m²	Average : 120W/m², Maximum400 W/m²	Average : 100W/m², Maximum 300W/m²	Average : 100W/m², Maximum 300W/m²	Average : 100W/m², Maximum 300W/m²	
7	Screen Weight	≤3.5kg/m²											
8	Power Supply Brand	YUANCHI											
9	Screen Transparency	≥50%	>55%	>60%	>60%	>60%	>70%	>75%	>85%	>90%	>90%	>95%	
10	IP Rating	IP45											
11	Average Lifespan	≥100,000 operating hours											
12	Power Requirements	220V±10%; AC50HZ											
13	Screen Brightness	1500- 5000cd/m²	1500- 5000cd/m²	1500- 5000cd/m²	1500- 5000cd/m²	1500- 5000cd/m²	1500- 4500cd/m²	1500- 3500cd/m²	1500-2500 cd/m²	1000 cd/m²	1000 cd/m²	1000 cd/m²	
14	Viewing Distance	6m-250m	6m-250m	10m-250m	10m-250m	10m-250m	16m-250m	20m-250m	30m-250m	40m-250m	50m-250m	60m-250m	
15	Viewing Angle	Horizontal ≥160°, Vertical ≥140°											

16	Gray Level	≥16 bit
17	Color Temperature	5500K-15000K (adjustable)
18	Driving Method	Static
19	Attenuation Rate	Less than 0.05% in 2 years
20	Refresh Rate	≥3840HZ
21	Frame Rate	≥60HZ
22	Trouble-Free Operating Time	≥100,000 hours
23	Led chip Failure Rate	≤1/10,000
24	Control System	Colorlight/Novastar, synchronous/asynchronous
25	Operating Environment	Operating environment: -10~+65 / 10~90 %RH Storage environment: -40~+85 / 10~90 %RH
26	Installation Method	Adhering to glass, Hanging installation, fixed installation.

Best for Facade

powered rear view picture



Unpowered rear view picture



JUMBOTRON LED FILM SCREEN



ORDINARY LED SCREEN



Best for Facade

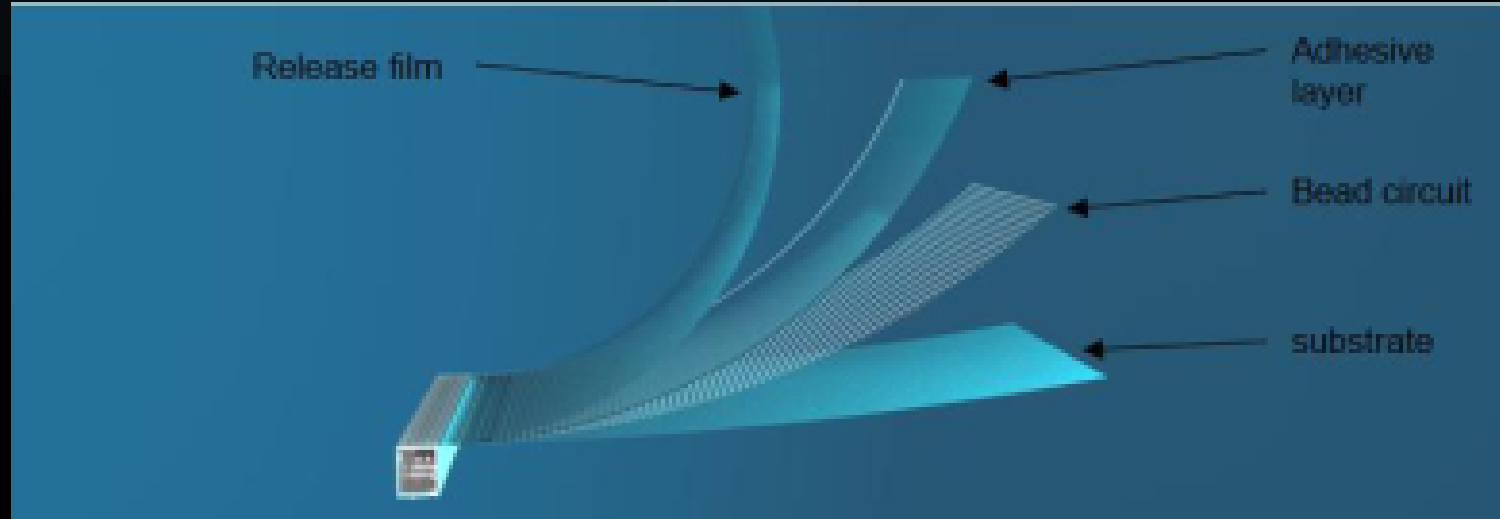
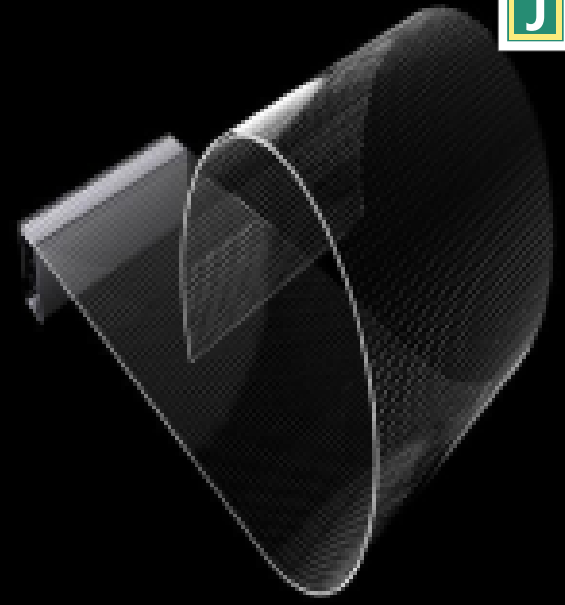
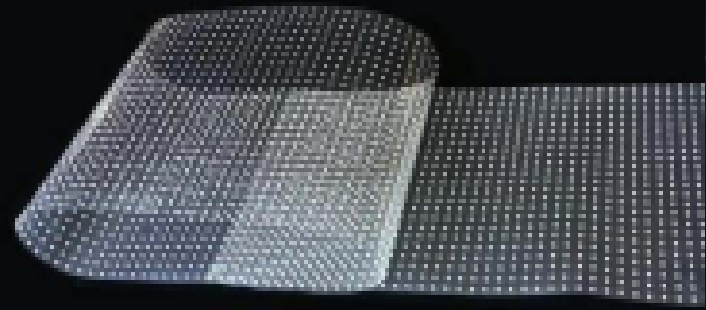
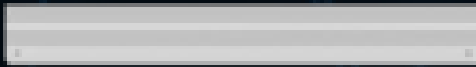


Best for Facade



02

LED CRYSTAL FILM

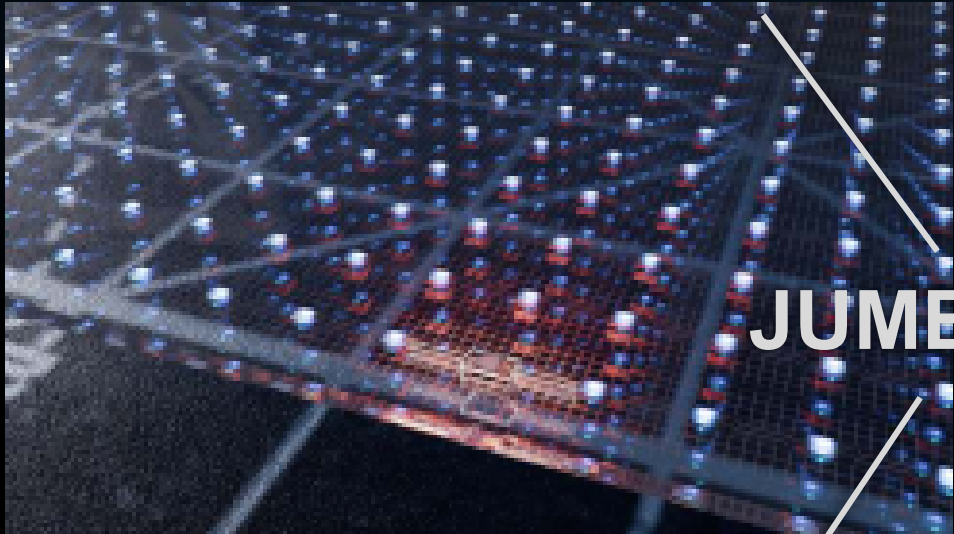


JUMBOTRON LED FLEXIBLE FILM												
		PH5	PH6	PH5*10	PH8	PH10	PH16	PH20	PH31.25	PH40	PH50	PH60
1	Pixel Pitch	L(5mm) * W(5mm)	L(6mm) * W(6mm)	L(5mm) * W(10mm)	L(8mm) * W(8mm)	L(10mm) * W(10mm)	L(16mm) * W(16mm)	L(20mm) * W(20mm)	L(31.25mm) * W(31.25mm)	L(40mm) * W(40mm)	L(50mm) * W(50mm)	L(60mm) * W(60mm)
2	Pixel Density	40000 pixels/m²	27777 pixels/m²	20000 pixels/m²	15625 pixels/m²	10000 pixels/ m²	3906 pixels/ m²	2500 pixels/ m²	1024 pixels/m²	625 pixels/ m²	400 pixels/ m²	278 pixels/m²
3	Display Thickness	1-3mm										
4	LED chip	SMD2020										
5	Product Size	1000*160 mm	996*192mm	960*160 mm	960*256mm	960*160mm	960*256 mm	960*320 mm	1000*250mm	1200*320 mm	1200*400 mm	1200*480mm
6	Power consumption	Average : 240W/m², Maximum: 800W/m²	Average : 240W/m², Maximum: 800W/m²	Average : 240W/m², Maximum: 800W/m²	Average : 240W/m², Maximum: 800W/m²	Average : 240W/m², Maximum: 800W/m²	Average : 200W/m², Maximum: 600W/m²	Average : 200W/m², Maximum: 600W/m²	Average : 120W/m², Maximum: 400W/m²	Average : 100W/m², Maximum: 300W/m²	Average : 100W/m², Maximum: 300W/m²	Average : 100W/m², Maximum: 300W/m²
7	Screen Weight	≤2kg/m²										
8	Power Supply Brand	YUANCHI										
9	Screen Transparency	>50%	>55%	>60%	>60%	>60%	>70%	>75%	>85%	>90%	>90%	>95%
10	IP Rating	IP45										
11	Average Lifespan	≥100,000 operating hours										
12	Power Requirements	220V±10%; AC50HZ										
13	Screen Brightness	1500- 4000cd/m²	1500- 4000cd/m²	1500- 4000cd/m²	1500- 4000cd/m²	1500- 4000cd/m²	1500- 4000cd/m²	1500- 3500cd/m²	1500-2500cd/ m²	1000cd/m²	1000cd/m²	1000cd/m²
14	Viewing Distance	6m-250m	8m-250m	10m-250m	8m-250m	8m-250m	16m-250m	20m-250m	30m-250m	40m-250m	50m-250m	60m-250m
15	Viewing Angle	Horizontal ≥160°, Vertical ≥140°										
16	Gray Level	≥16 bit										

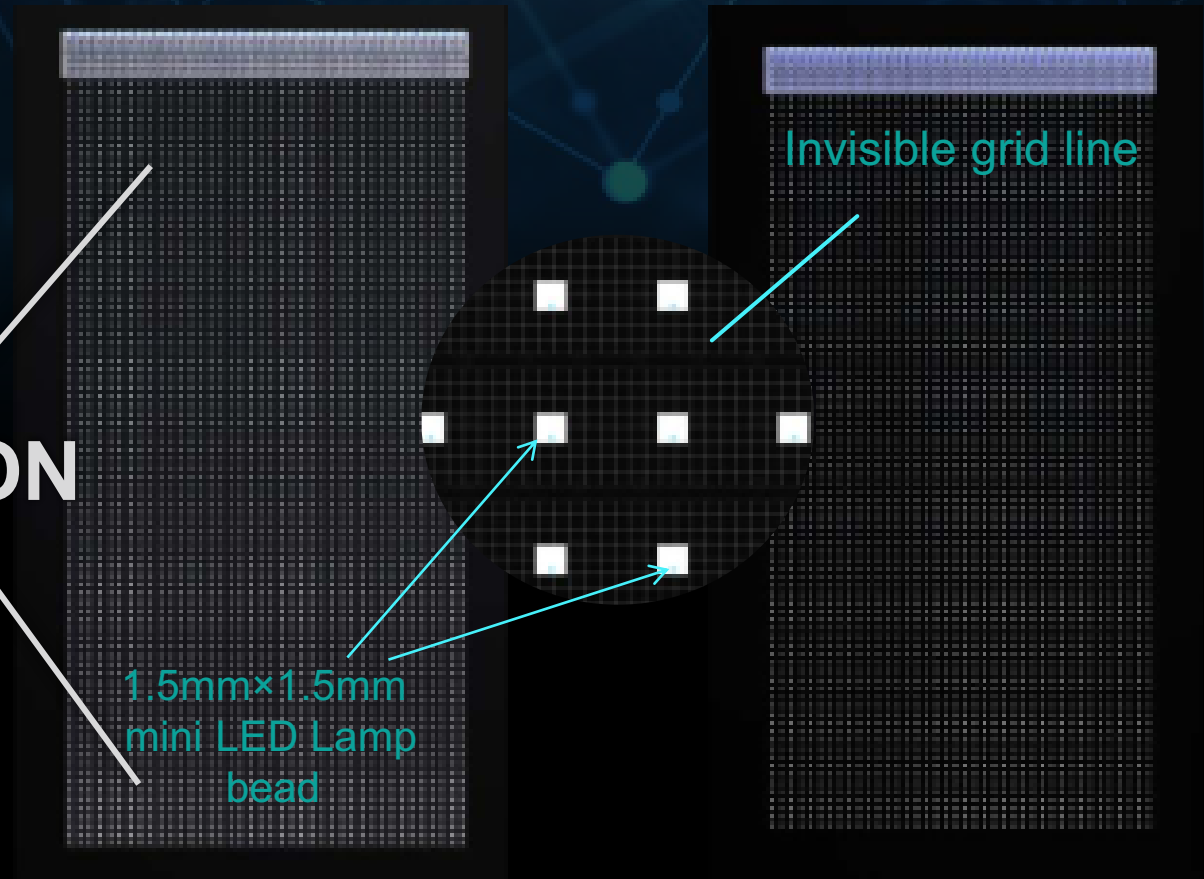
17	Color Temperature	5500K-15000K (adjustable)
18	Driving Method	Static
19	Attenuation Rate	Less than 0.05% in 2 years
20	Refresh Rate	≥3840HZ
21	Frame Rate	≥60HZ
22	Trouble-Free Operating Time	≥100,000 hours
23	Led chip Failure Rate	≤1/10,000
24	Control System	Colorlight/Novastar, synchronous/asynchronous
25	Operating Environment	Operating environment: -10~+65 / 10~90 %RH Storage environment: -40~+85/10~90 %RH
26	Installation Method	Adhering to glass, Hanging installation, fixed installation. Support arbitrary size cropping and bending

1, LED light and drive in one, static drive,
SMD1515/2020, Sanan chip;
Breakpoint continuation, single Led bead is
broken, not affect the video playback.

2, 50%-95% High transparency, which does not
affect the glass daylighting.



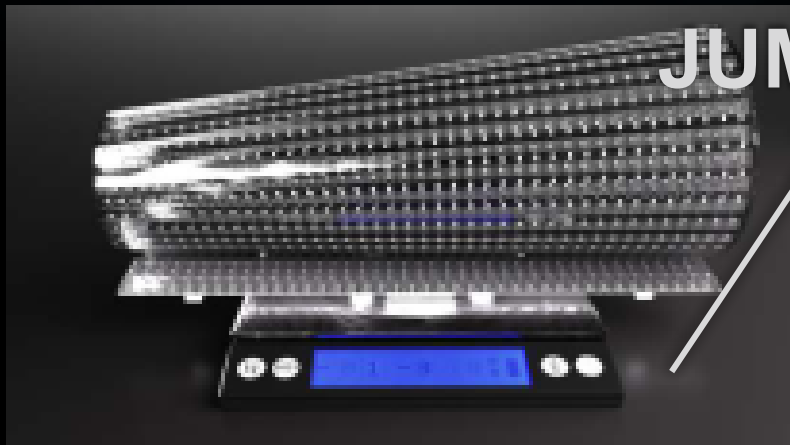
JUMBOTRON



3, 1-3mm thickness, 2kg/ m² weight.

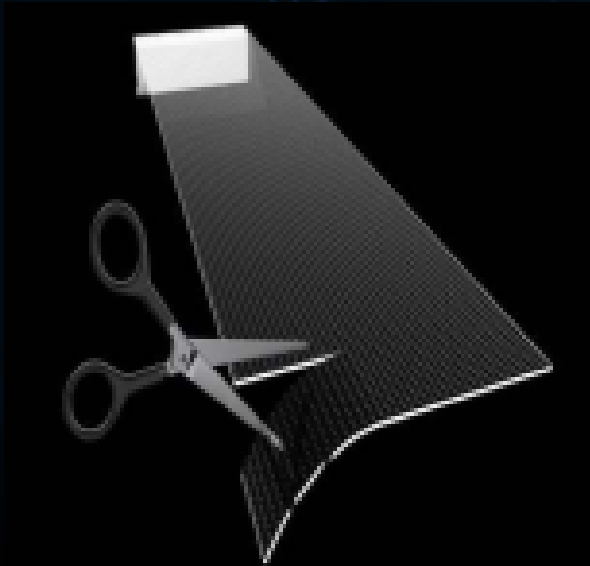


4, Easy to install: without steel structure, just stick the thin screen slightly and connect the power signal

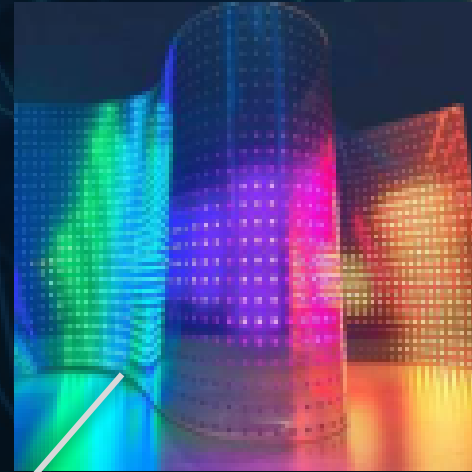


JUMBOTRON

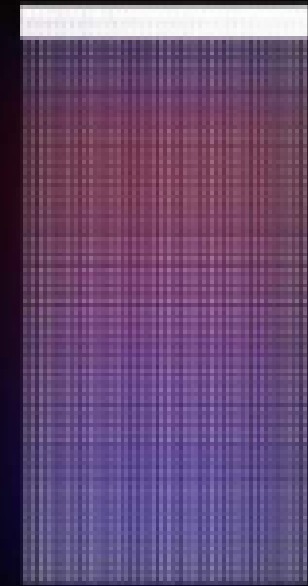
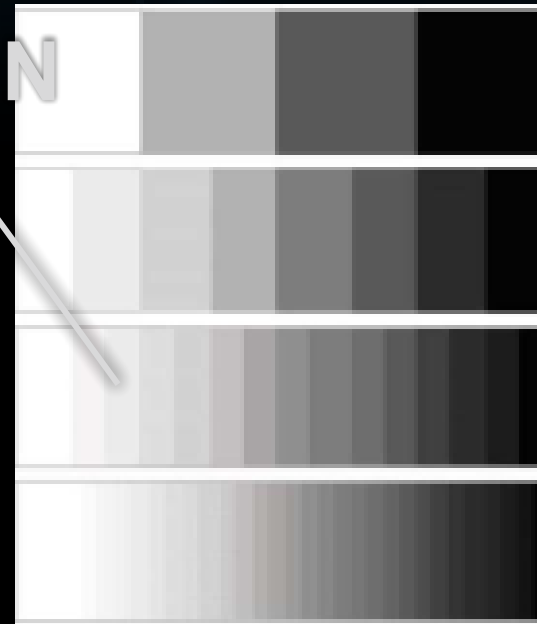
5, Flexible: It can be bent and cut, no size limitations, can customize design according to project requirement .



6, Colorful

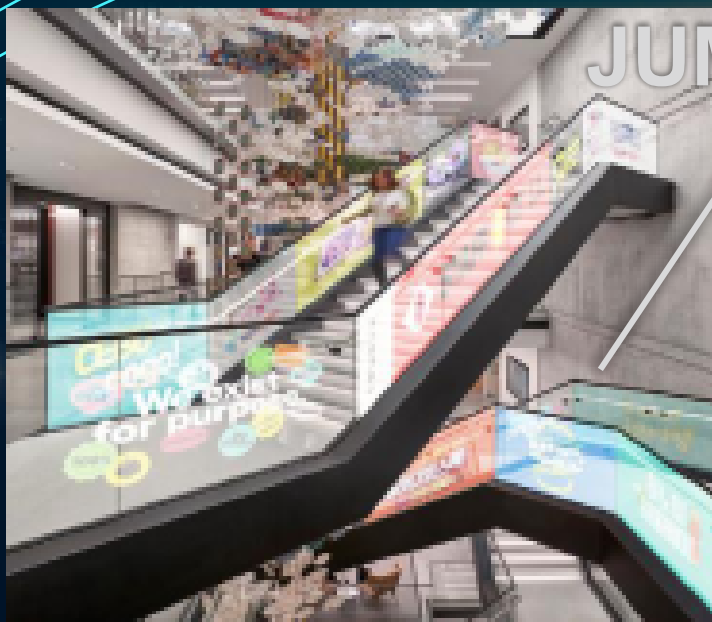
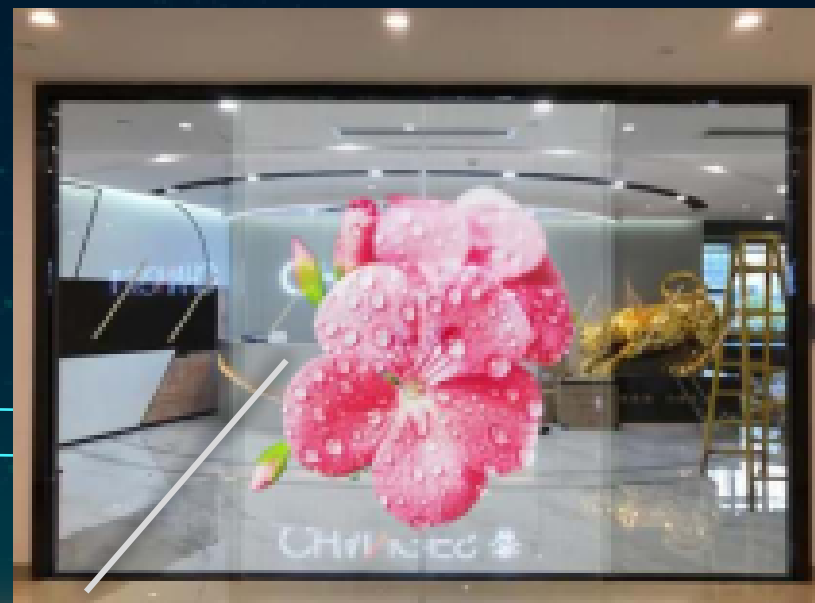


7, Gray rate is >16bit



JUMBOTRON

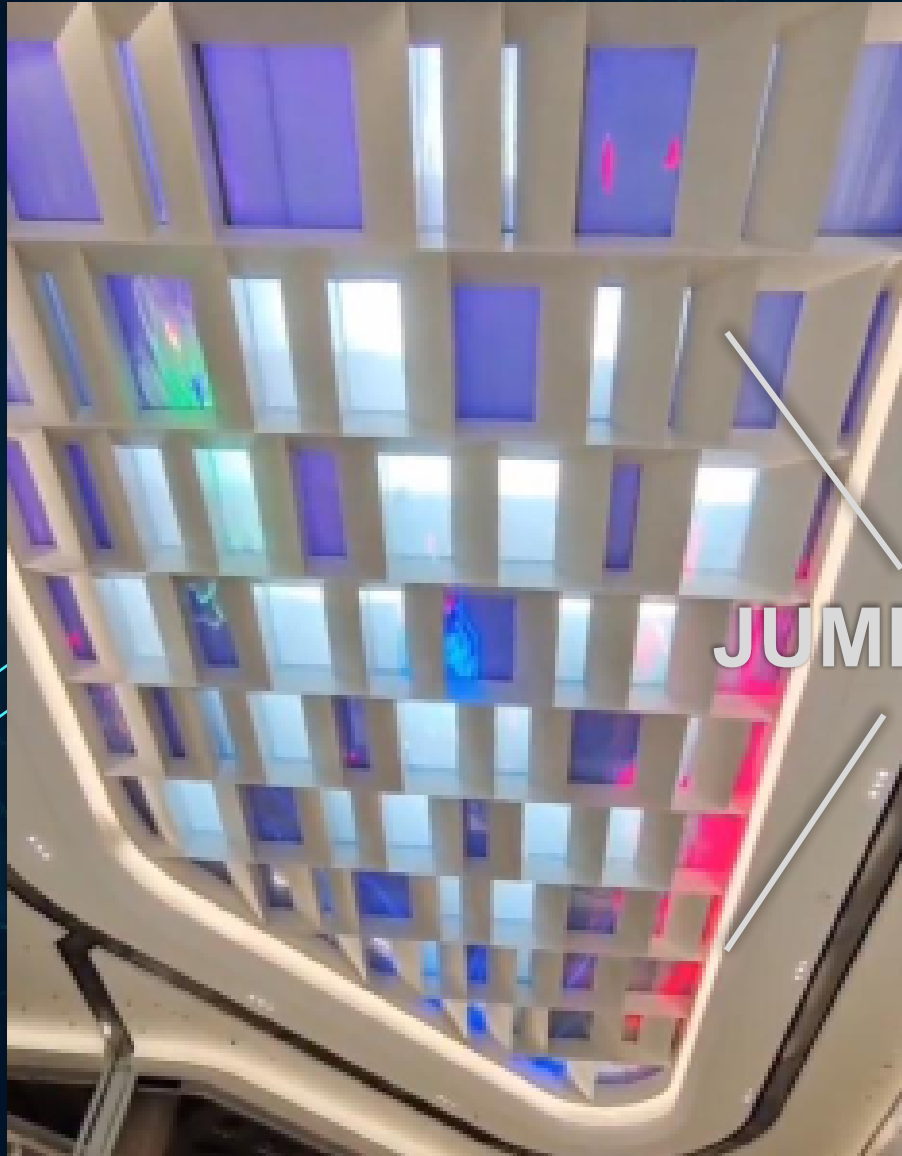
Application for small glass curtain wall, retail shop, product display, brand promotion, glass guardrail



JUMBOTRON



Application for small glass curtain wall, retail shop, product display, brand promotion, glass guardrail



JUMBOTRON

03

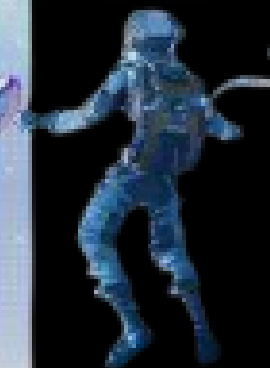
LED HOLOGRAPHIC FILM

Transparent and Invisible

High-definition Image Quality



JUMBOTRON



JUMBOTRON LED HOLOGRAPHIC FILM SCREEN

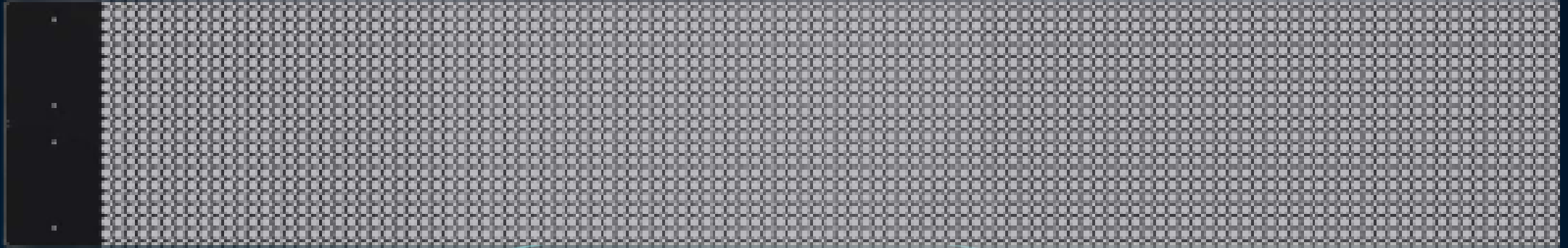
		PH3.508	PH3.91	PH5	PH6.25	PH8	PH10	PH16	PH20	PH30	PH40	PH50
1	Pixel Pitch	L(3.508mm) W(3.508mm)	L(3.91mm) W(3.91mm)	L(5mm) W(5mm)	L(6.25mm) W(6.25mm)	L(8mm) W(8mm)	L(10mm) W(10mm)	L(16mm) W(16mm)	L(20mm) W(20mm)	L(30mm) W(30mm)	L(40mm) W(40mm)	L(50mm) W(50mm)
2	Pixel Density	81225pixels/ m ²	65536pixel s/m ²	40000 pixels/ m ²	25600pixels/ m ²	15625pixels/ m ²	10000pixels /m ²	3906pixels/ m ²	2500pixels/ m ²	1024pixels/ m ²	625pixels/ m ²	400pixels/m ²
3	Display Thickness	1-3mm										
4	LED chip	SMD1515 (Light drive in one)	SMD2020(Light drive in one)									
5	Product Size	1150mm* 225mm	1152mm* 125mm	1150mm* 160mm	1150mm* 200mm	1160mm* 256mm	1150mm* 320mm	1152*256 mm	1160mm* 320mm	1170*240 mm	1160mm* 320mm	1150mmm* 400mm
6	Power consumption	Average: 200W/m ² , Maximum: 600W/m ²	Average: 200W/m ² , Maximum: 600W/m ²	Average: 200W/m ² , Maximum600 W/m ²	Average: 200W/m ² , Maximum600 W/m ²	Average: 240W/m ² , Maximum60 0W/m ²	Average: 240W/m ² , Maximum 800W/m ²	Average: 200W/m ² , Maximum 600W/m ²	Average: 200W/m ² , Maximum 600W/m ²	Average: 120W/m ² , Maximum 400W/m ²	Average: 100W/m ² , Maximum 300W/m ²	Average: 100W/m ² , Maximum300 W/m ²
7	Screen Weight	≤3kg/m ²										
8	Power Supply Brand	YUANCHI										
9	Screen Transparency	>70%	>80%	>85%	>90%	>90%	>92%	>93%	>95%	>95%	>95%	>99%
10	IP Rating	Better than IP45										
11	Average Lifespan	≥100,000 operating hours										
12	Power Requirements	220V±10% ; AC50HZ 3-phase 5-wire										
13	Screen Brightness	800- 3000cd/m2	800- 3000cd/m2	800- 3000cd/m2	800- 5000cd/m2	1500- 5000cd/m2	1500- 5000cd/m2	1500- 4500cd/m2	1500- 3500cd/m2	1500- 2500cd/m2	1000cd/m2	1000cd/m2

14	Viewing Distance	3m-150m	4m-150m	6m-250m	8m-250m	10m-250m	10m-250m	16m-250m	20m-250m	30m-250m	40m-300m	50m-350m
15	Viewing Angle	Horizontal $\geq 160^\circ$, Vertical $\geq 140^\circ$										
16	Gray Level	≥ 16 bit										
17	Color Temperature	5500K-15000K (adjustable)										
18	Driving Method	Static										
19	Attenuation Rate	Less than 0.05% in 2 years										
20	Refresh Rate	$\geq 3840\text{HZ}$										
21	Frame Rate	$\geq 60\text{HZ}$										
22	Trouble-Free Operating Time	$\geq 10,000$ hours										
23	Led chip Failure Rate	$< 1/10,000$, and is discretely distributed										
24	Control System	Colorlight/Novastar, synchronous/asynchronous										
25	Operating Environment	Operating environment: $-10\sim+65$ / $10\sim90$ %RH Storage environment: $-40\sim+85$ / $10\sim90$ %RH										
26	Installation Method	Adhering to glass, Hanging installation, fixed installation. Support arbitrary size cropping and bending										

- Invisible display screen
- Seamless large-area splicing
- Full screen transparent without frame



Thickness only 1-3mm



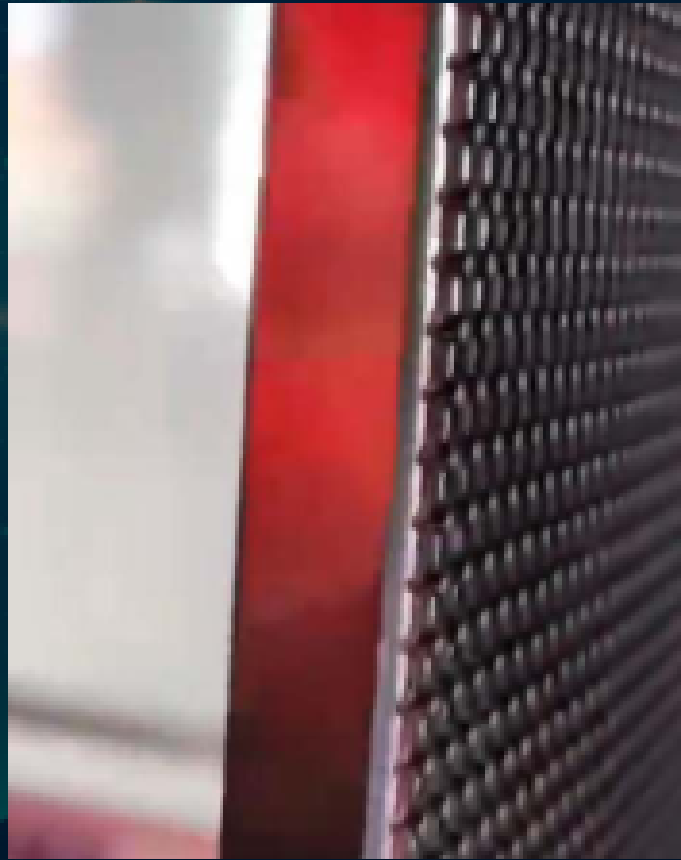
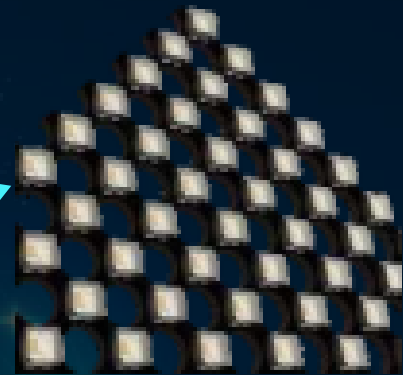


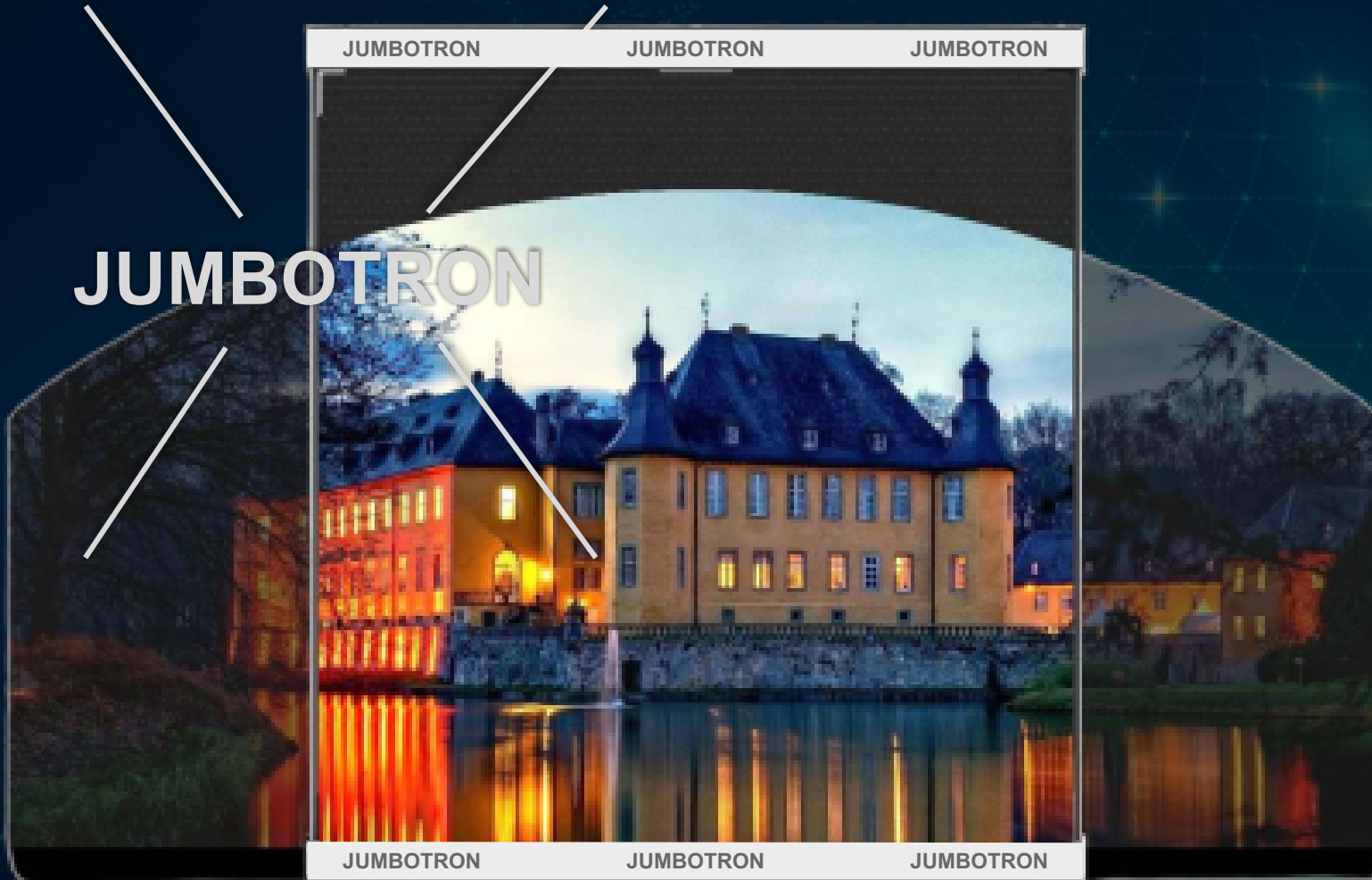
Holographic 3D
Floating Image
No Glasses Needed

JUMBOTRON



- Equally spaced pixel arrangement, higher quality picture
- Static scanning with integrated lamp driver, picture is more stable
- 16bit gray level, rich and delicate colors





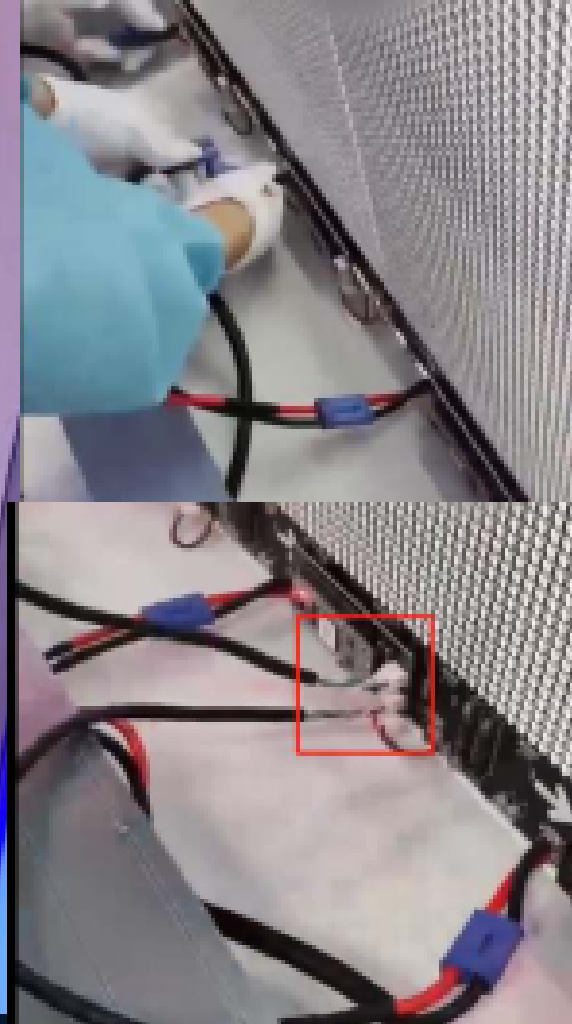
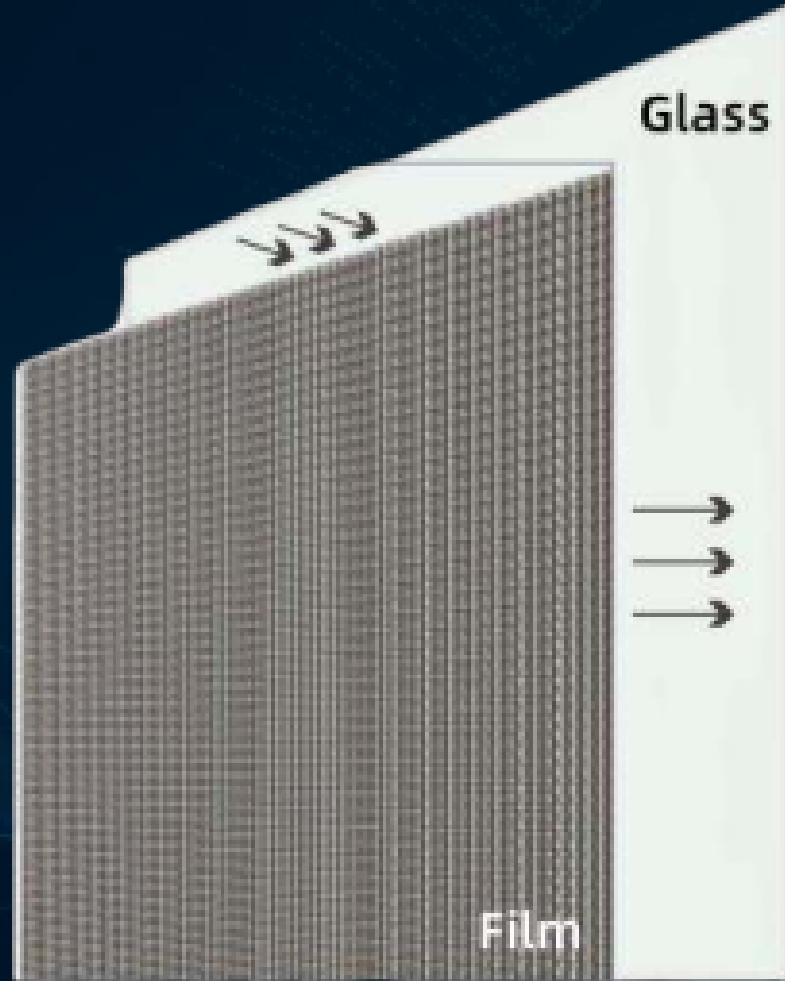
5000cd/ m² brightness

9000:1 Contrast

Flexible and Cuttable



Easy to install: without steel structure, just stick the thin screen slightly and connect the power signal



Other options of Holographic film



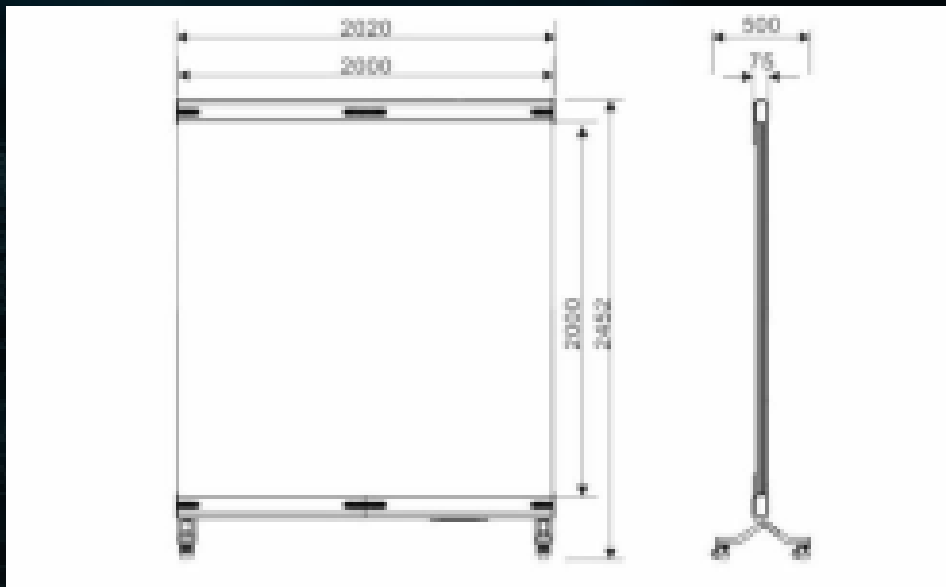
Hanging type

JUMBOTRON



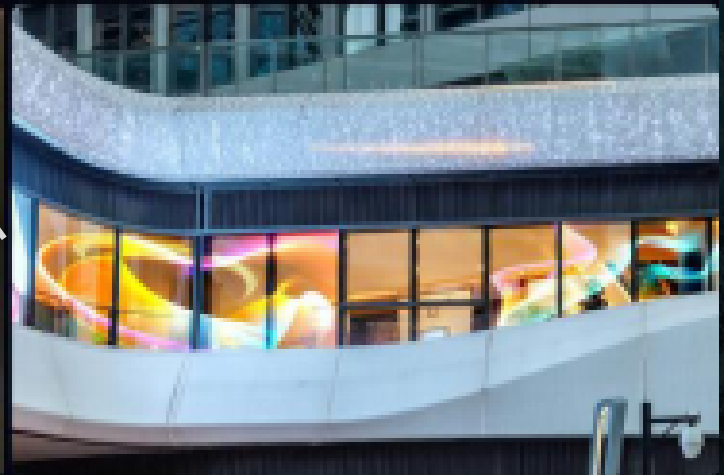
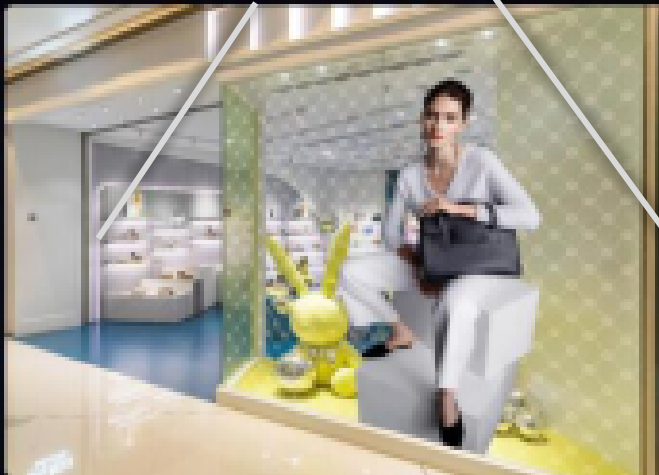
Standing type

1*2/2*2m Module



Model	S3-2	S3-4
Module (mm)	1000*2000	2000*2000
Pixel Pitch(mm)	P3.91*3.91	P3.91*3.91
Pixel Density(dot/m ²)	65536	65536
Overall dimensions (mm)	Hanging:1020*2230*75 Standing:1020*2452*500	Hanging:2020*2230*75 Standing:2020*2452*500
Display Area(mm)	1000*2000	2000*2000
Brightness(cd/m ²)	4000	
Drive mode	Lamp driver in one	
Driving method	Static	
Trouble-Free Operating Time	≥10,000 hours	
Pixel composition	RGB three-in-one	
Gray level	65536 (16bit)	
Power consumption	Average: 280W/ m ² , Maximum: 800W/m ²	
Control system	Colorlight/Novastar	
Connection method	Support WiFi/DVI/HDMI/DP/USB/RJ45 network cable/network remote control	
Input power	AC100~240V50/60Hz	
Module working power	DC4.2~5V±0.2V	
Application	Indoor	
Operating Environment	Operating environment: -10~+65 °C/ 10~90 % RH	

Application



THANK YOU

JUMBOTRON

WWWJUMBOTRON.COM
INFO@JUMBOTRON.COM

